

ProfileMaster PLUS

Modular

light crane system

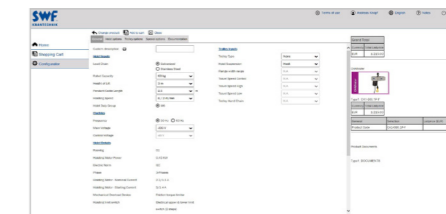
for maximum flexibility

ProfileMaster PLUS

ProfileMaster PLUS is a light crane system based on a set of highly compatible components. With its flexible design and high-quality parts, you can build tailor-made crane systems for your specific applications and requirements.



ProfileMaster PLUS offers aluminum and steel profiles that can be easily combined with one another. Forget complex assembly processes. Wherever you need to build a flexible profile crane system, ProfileMaster PLUS delivers compelling results quickly. You can also equip ProfileMaster PLUS with the tried-and-tested electric chain hoists from SWF.



Chain@Master

Calculating and ordering your custom light crane system is simple with the online configuration tool Chain@Master. It provides a wide range of customizing options to design your light crane system, together with helpful drawings, price information and even alternative suggestions.

ProfileMaster PLUS AL

SWF
KRAFTTECHNIK

SWF
KRAFTTECHNIK

Your PLUS: High efficiency

ProfileMasterPLUS can be expanded in many different ways with existing systems on the market. Choose from several installation options with an optimized selection of suspensions and create space-saving solutions with varying headroom. You can even implement custom light crane systems with different power supply methods to address challenging structural conditions.



Fast, simple assembly

- » Precision-fit joint connections
- » High load-bearing connection system
- » Internal conductor lines also available



Durable, economical system

- » Low maintenance
- » Long service life
- » Solid construction
- » Customizable to individual production processes

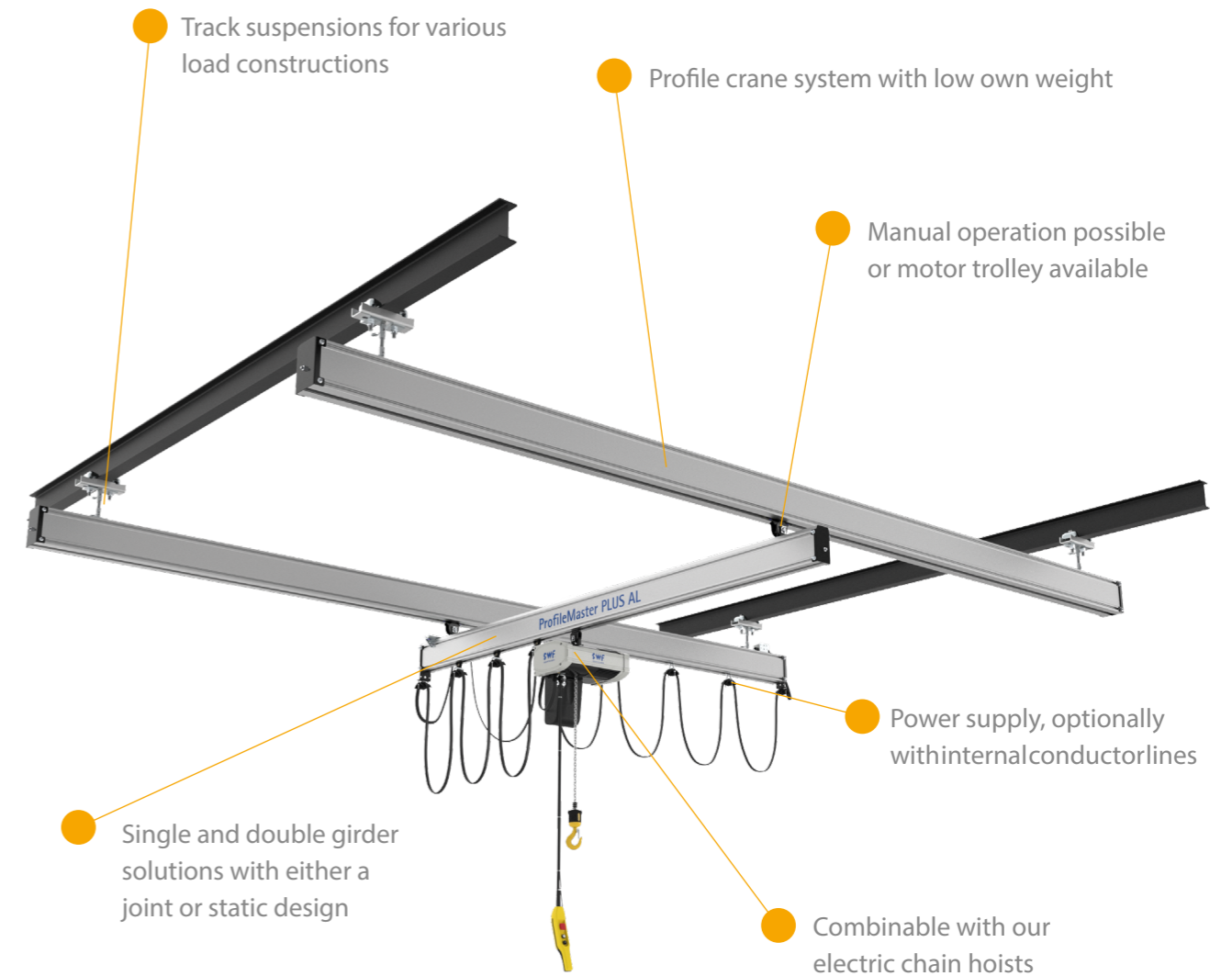
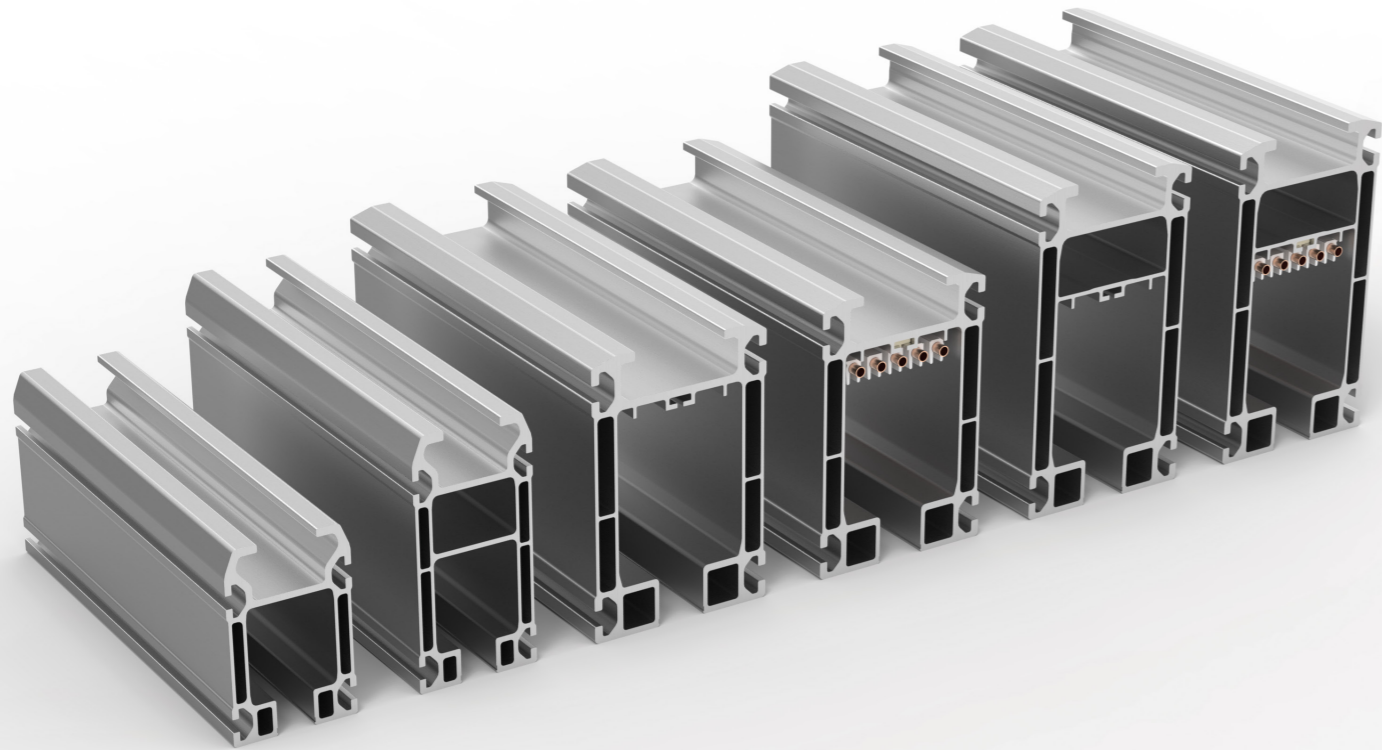


Safe, comfortable operations

- » State-of-the-art quality made in Germany
- » Smooth, quiet operations
- » Power cut-off switches on every bridge (in systems with two or more bridges)
- » Minimal manufacturing tolerances

ProfileMaster PLUS AL

Light crane system made of aluminum for loads up to 2,000 kg



Lightweight meets heavyweight

The aluminum, lightweight crane system ProfileMaster PLUS AL features a heavy, 2-ton load capacity and reduced own weight with low operating costs and highly efficient, on-site assembly.

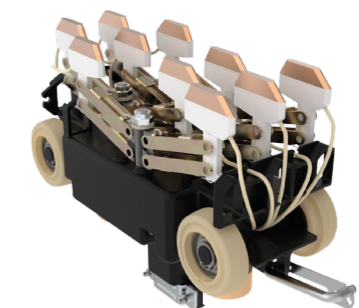
Its innovative connection system handles heavy loads so you can create optimal suspension distances and spans. Since all components are pre-sorted on delivery, you get a fast overview and can match the individual parts easily. This saves valuable time in assembly.

Choose from six different aluminum profile types in four sizes. Two of these profiles are additionally equipped with an internal conductor line. Connection plates ensure that bolting the joints is fast and simple.



High quality made in Germany

- » Highly durable material
- » Low own weight
- » Reduced operating noise



Gentle load handling

- » Smooth movements
- » Easy travelling
- » Specially designed, high-performance running wheels

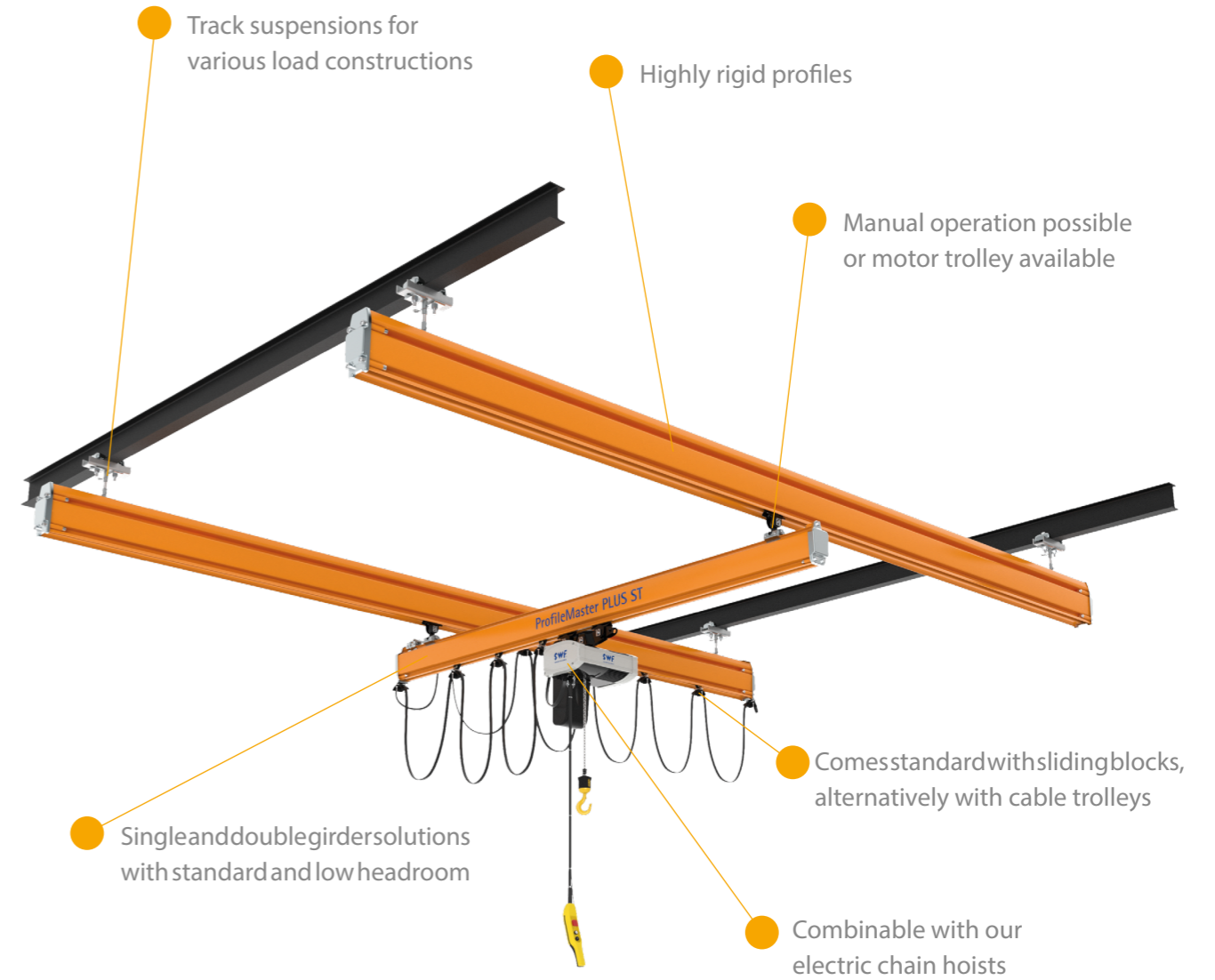
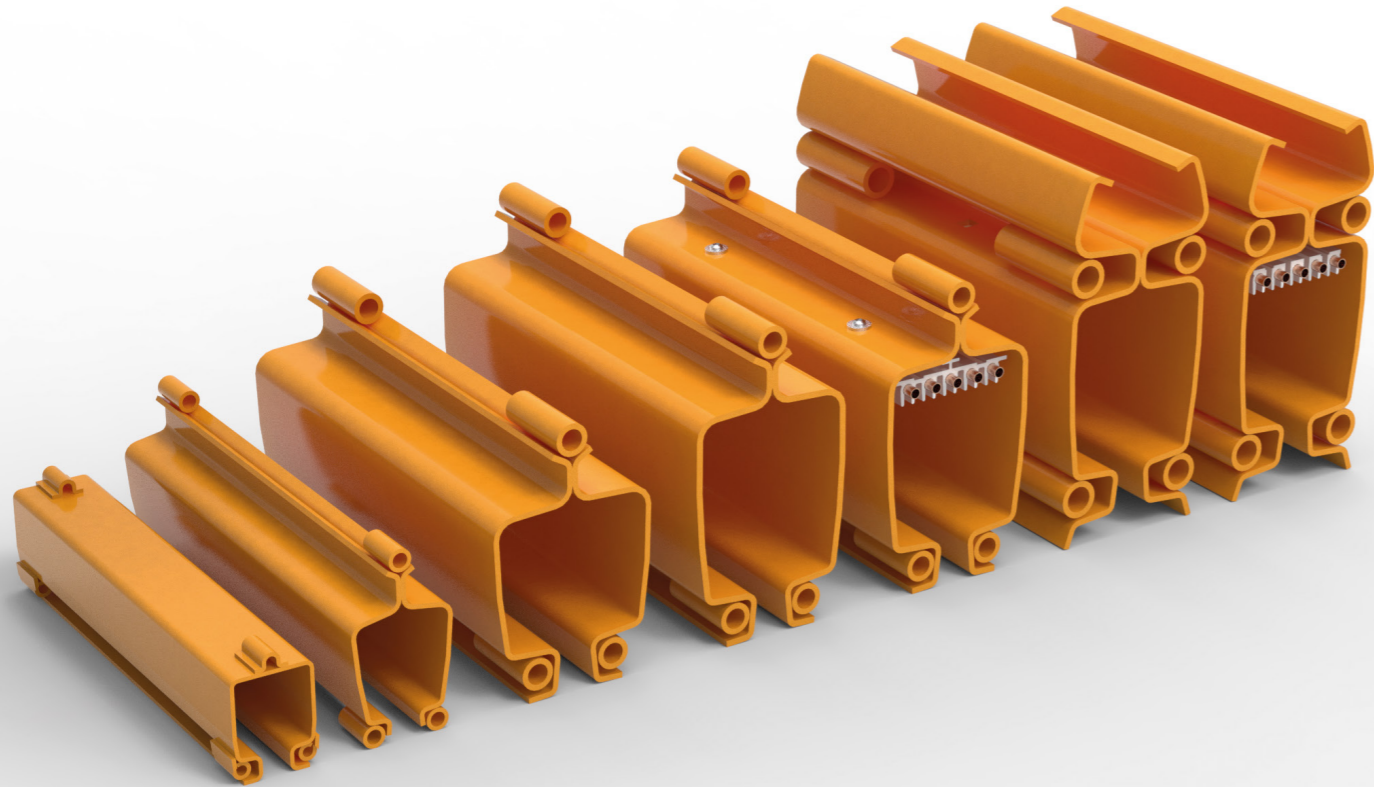


Tailor-made system

- » Suitable for use in building structures with low static load capacities
- » Simple, time-saving assembly
- » Optimized number of suspensions

ProfileMaster PLUS ST

Light crane system made of steel for loads up to 2,000 kg



Flawless production for ideal assembly

ProfileMaster PLUS ST, a light crane system made of steel, offers highly flexible planning options and is designed for loads for up to 2 tons.

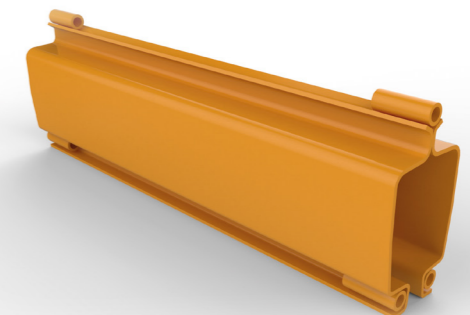
Compatible components and optimized suspensions ensure a first-time assembly in record speed. You can later extend or modify the system as you need in minimal time.

Choose from seven different steel profile types in five sizes for various loads and suspension distances. Two of these profiles are additionally equipped with an internal conductor line. All profiles are cold-formed and powder-coated, which makes them very rigid.



Flexible design options

- » Large selection of profiles
- » Chain@Master (online configuration tool for standard systems)
- » Easy modification and extension options



Low maintenance costs

- » Long service life
- » Premium, robust profiles
- » Set of highly compatible components

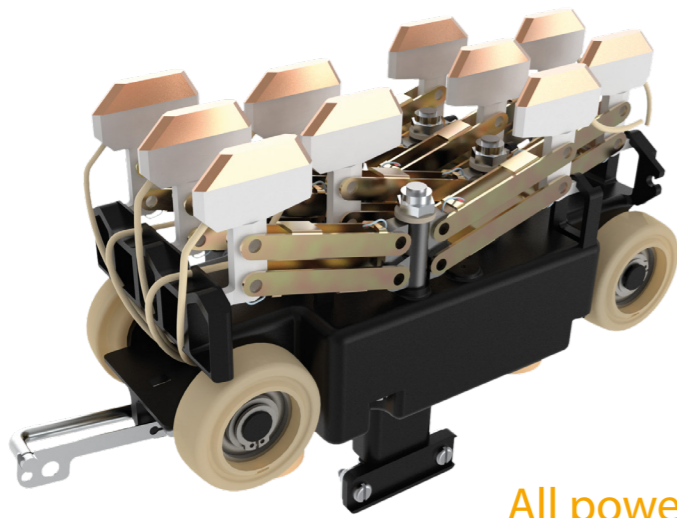


Fast assembly

- » Reduced profile weight
- » Optimized suspensions and connections
- » Profiles that can be bolted together quickly and easily

Components

Use our high-grade components to flexibly design your custom crane system.

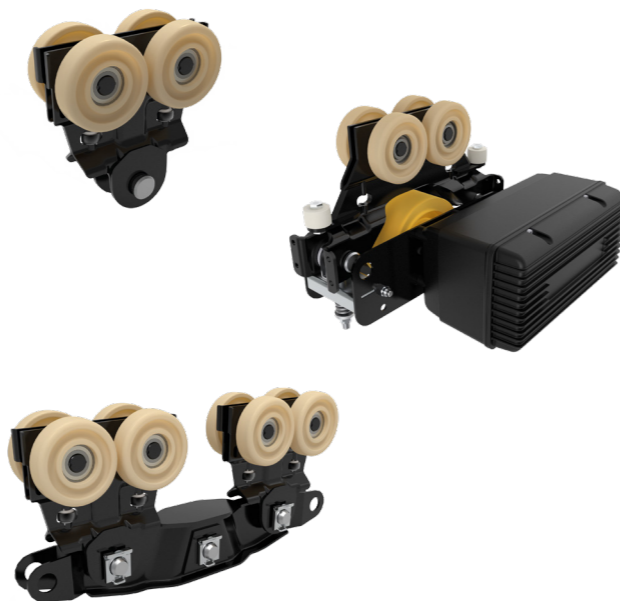


All powered up

Our collector trolley for inner conductors can be used with ProfileMaster PLUS AL and ProfileMaster PLUS ST.

Running smoothly

ProfileMaster PLUS can be operated either manually or with an electric motor. The trolleys ensure smooth, low-noise operation.



Compact design & high performance

Both ProfileMaster PLUS design options are combinable with our electric chain hoists.



CHAINster

CHAINster models are always a good choice! Our electric chain hoists are robust, flexible and economical.

